

HB 2017 Transit Advisory Committee

August 23, 2024

Webex

Chat

- Right side window
- Chats are recorded

Participants

- Right side window
- Raise your hand

Video On/Off

Reactions

Leave Meeting

Mute/Unmute



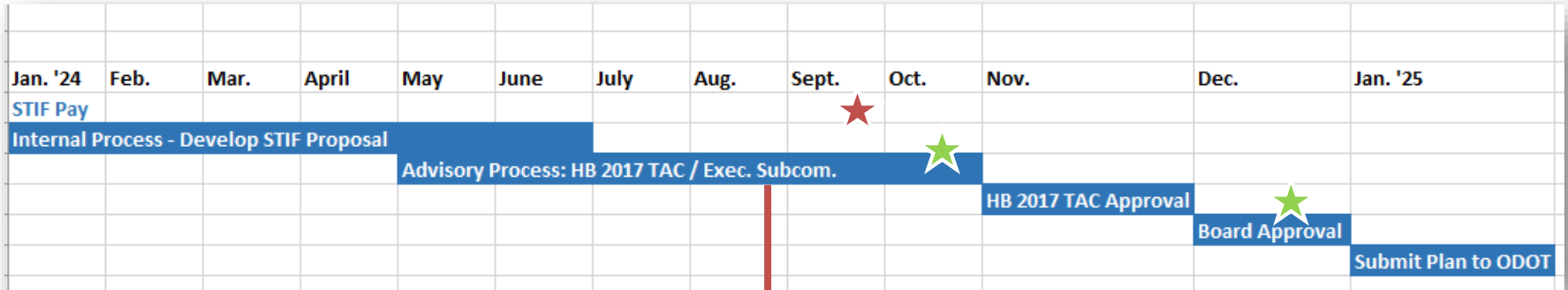
Meeting Agenda

Public comment	10:00 a.m.
Timeline Check-in	10:05 a.m.
TriMet Financial Outlook	10:10 a.m.
Proposed FY26-27 STIF Plan Budget	10:30 am.
Forward Together Discussion	11:00 a.m.
Committee Stipend Program	11:25 a.m.
Meeting Adjourns	11:30 a.m.

Public Comment



Timeline for STIF Plan Process



We are here

- ★ TriMet Board Finance & Audit Committee Review
- ★ TriMet Board of Directors Review

TriMet Financial Outlook

TriMet's Financial Outlook

Factors Considered

- Inflation of expenditures
 - Personnel
 - Materials and Services
- Growth of Revenues
 - Passenger Fares
 - Tax Receipts
 - HB2017/STIF
 - Grants

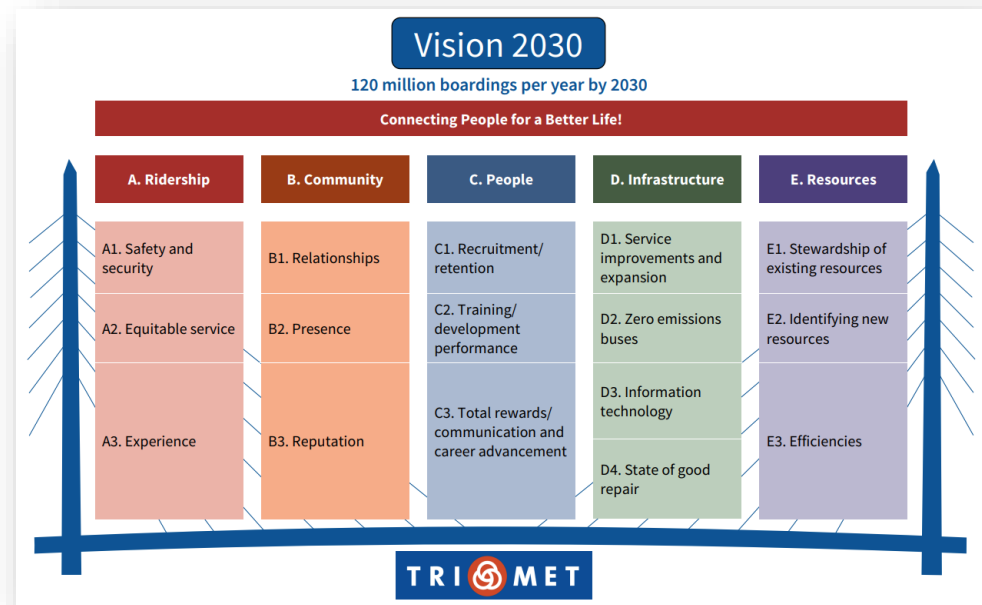


TriMet's Financial Outlook



Cost Drivers

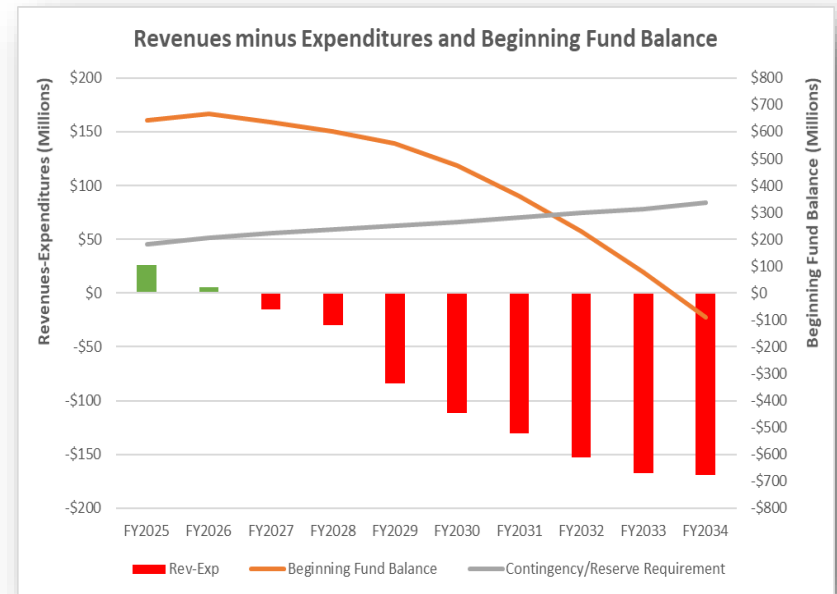
- State of Good Repair
- Service Growth
- System Expansions
- Transition to Zero Emission
- Rider Safety & Security



TriMet's Financial Outlook

Results

- Annual Deficits
 - Expenditures rising faster than Revenues
 - Annual deficits grow to \$100M annually
- The “Fiscal Cliff”
 - Available fund balance runs out in FY2031
 - \$100M+ of budget cuts will be required
- We are taking corrective action now





Fiscal Year 2025 Budget: <http://trimet.org/budget/> **Questions?**

Our Values: Safety · Inclusivity · Equity · Community · Teamwork

Proposed FY26-27 STIF Plan Budget

FY26-27 STIF Programs

TriMet FY26-27 STIF Plan Budget Outline

- Fixed route service expansion & preservation
- Subsidized fare programs
- Student fare program
- LIFT/Accessible vehicles
- Regional Coordination Program
- Portland Streetcar
- STIF Human Services Program

FY26-27 Projected STIF Revenues

Projected Revenues	FY26	FY27	Total
ODOT Projected STIF Payroll Based Formula Funds (Jan. 2024)	\$66,019,768	\$69,355,981	\$135,375,749
20% Over Projection	\$13,203,954	\$13,871,196	\$27,075,150
Unspent STIF Funds – Prior Biennium	\$17,493,170	\$18,377,162	\$35,870,332
Total	\$96,716,892	\$101,604,339	\$198,321,231

TriMet Proposed FY26-27 STIF Plan Budget

Program	FY26	FY27	Total
Fixed Route Service	\$69,942,362	74,190,431	\$144,132,793
Subsidized Fare Programs	\$11,268,521	\$11,219,647	\$22,488,168
Student Fare Program (1% of revenue)	\$967,169	\$1,016,043	\$1,983,212
LIFT/Accessible Vehicles	\$1,466,440	\$1,700,417	\$3,166,857
Regional Coordination	TBD	TBD	TBD
Portland Streetcar	TBD	TBD	TBD
Human Services	\$2,000,000	\$2,000,000	\$4,000,000



Forward Together Discussion

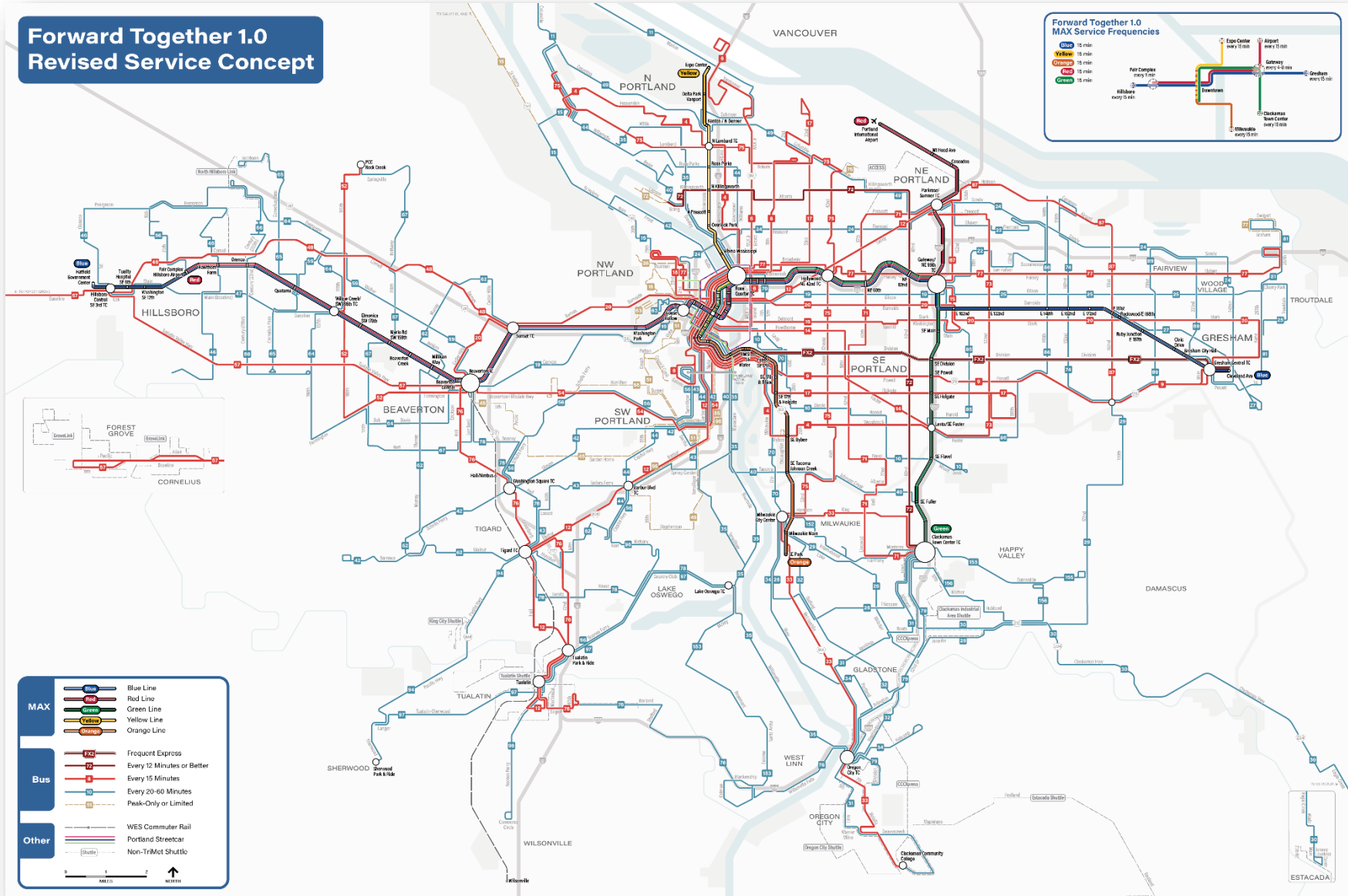
Service Expansion

Forward Together 1.0 Revised Service Concept

**Forward Together 1.0
MAX Service Frequencies**

■ Blue 15 min
■ Yellow 15 min
■ Orange 15 min
■ Red 15 min
■ Green 15 min

Expo Center every 15 min
 Airport every 15 min
 Gateway every 2-8 min
 Gresham every 15 min



Service Expansion

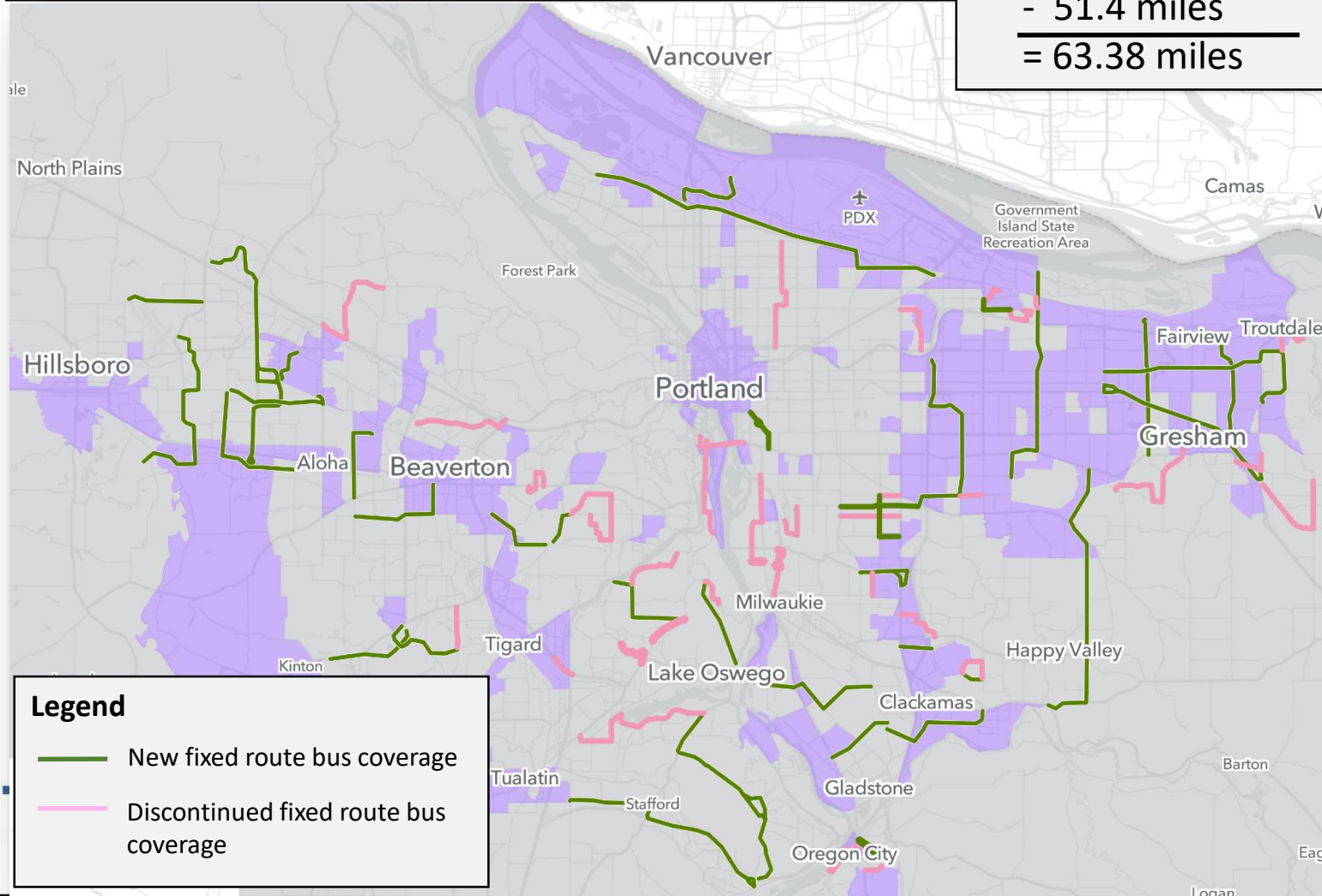
Forward Together: Service Additions/ Discontinuations

New Coverage

+ 114.78 miles

- 51.4 miles

= 63.38 miles

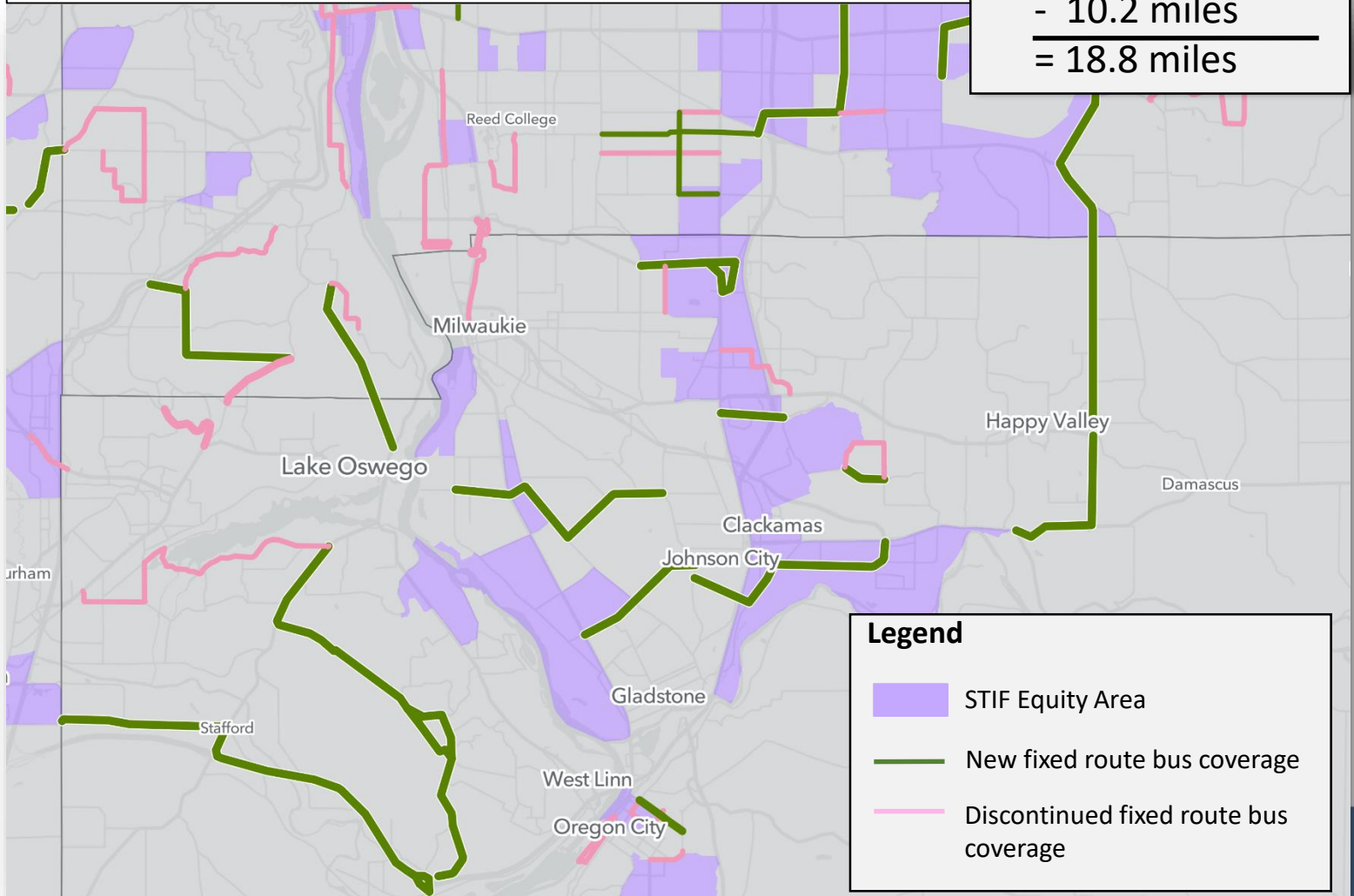


Service Expansion

Forward Together: Service Additions/ Discontinuations – Clackamas

New Coverage

$$\begin{array}{r} + 29.0 \text{ miles} \\ - 10.2 \text{ miles} \\ \hline = 18.8 \text{ miles} \end{array}$$



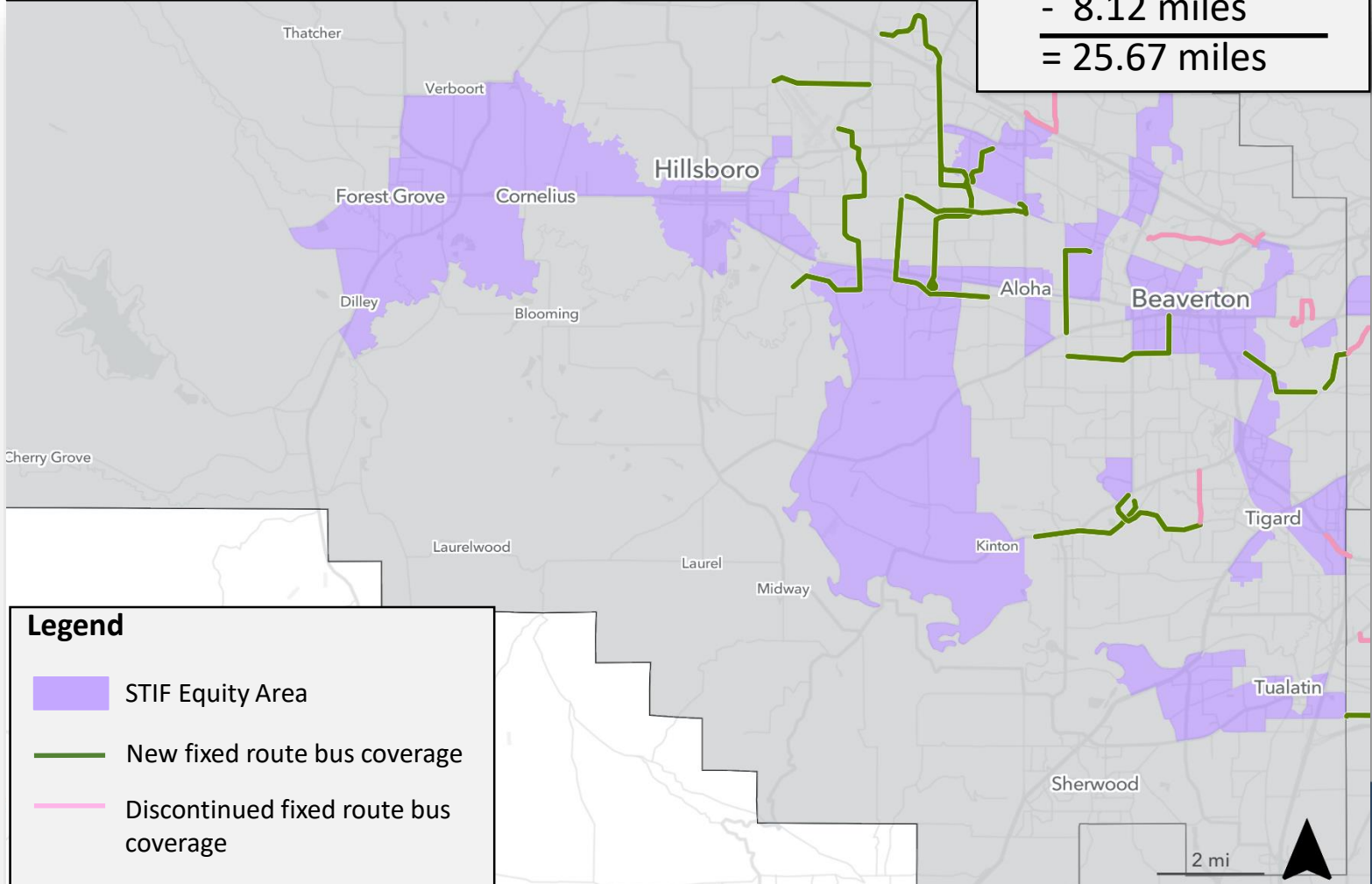
Service Expansion

Forward Together: Service Additions/ Discontinuations – Washington

New Coverage

+ 33.79 miles
- 8.12 miles

= 25.67 miles



Legend

- STIF Equity Area
- New fixed route bus coverage
- Discontinued fixed route bus coverage

Service Expansion

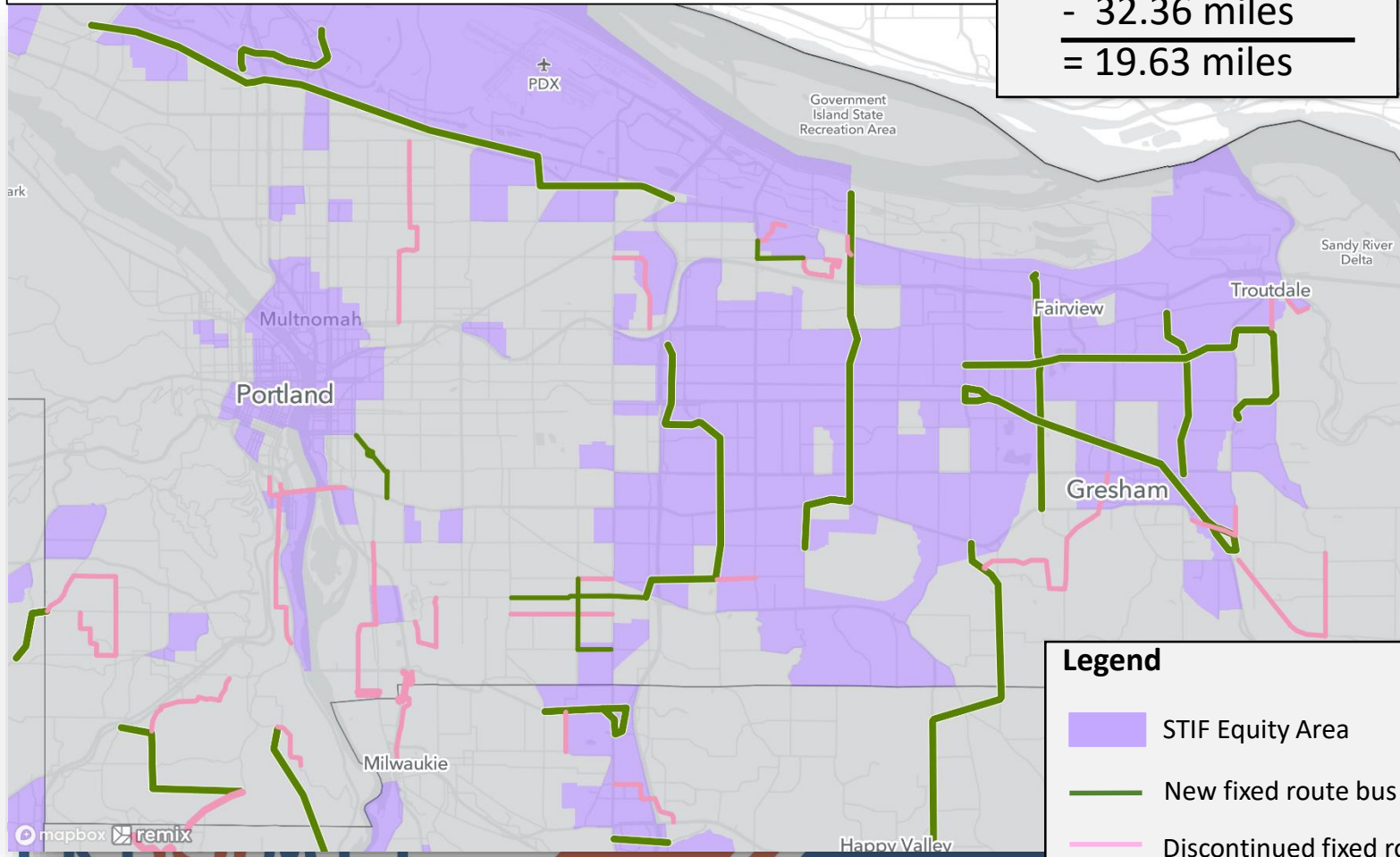
Forward Together: Service Additions/ Discontinuations – Multnomah

New Coverage


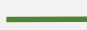

+ 51.99 miles

- 32.36 miles

= 19.63 miles



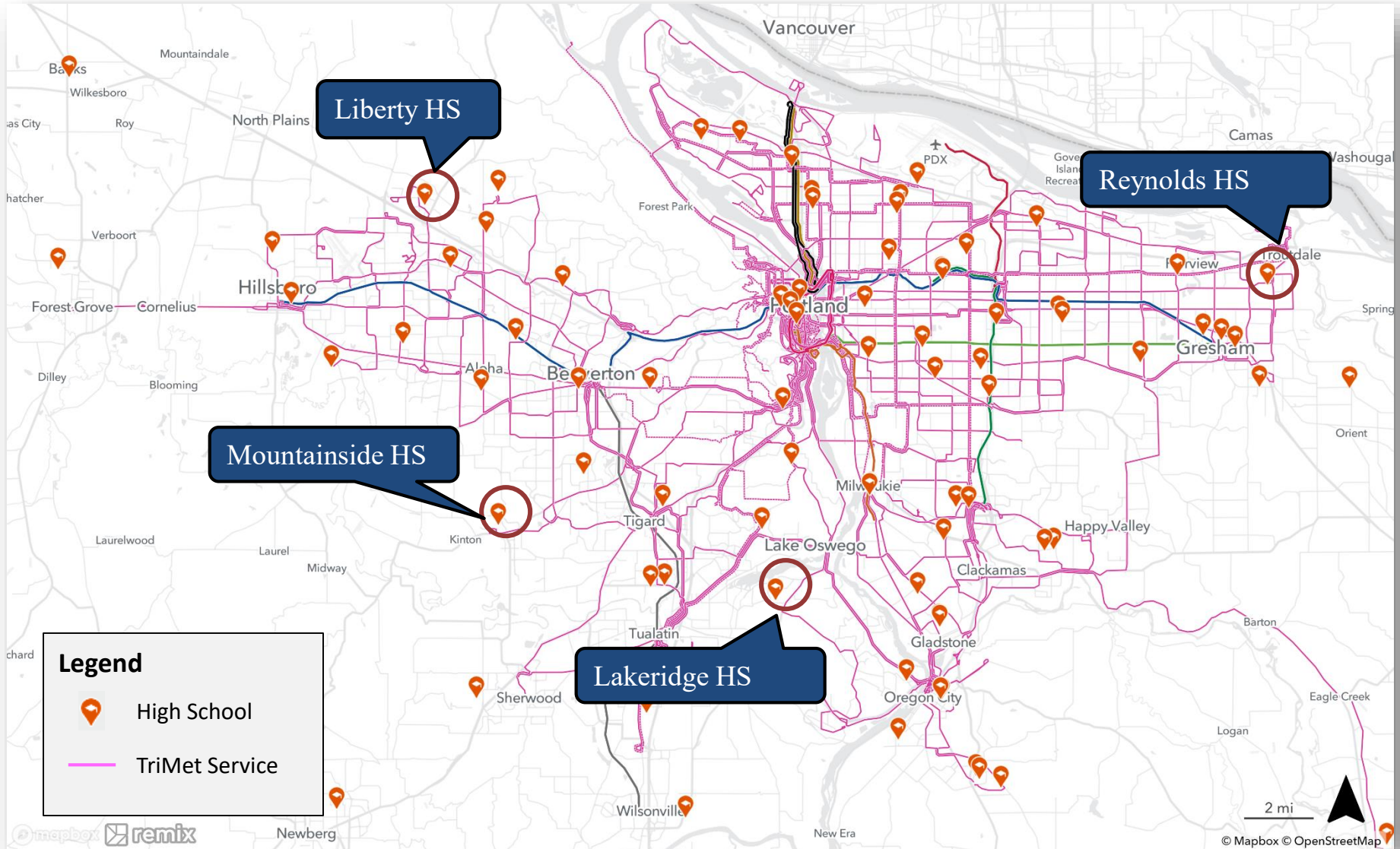
Legend

-  STIF Equity Area
-  New fixed route bus coverage
-  Discontinued fixed route bus coverage

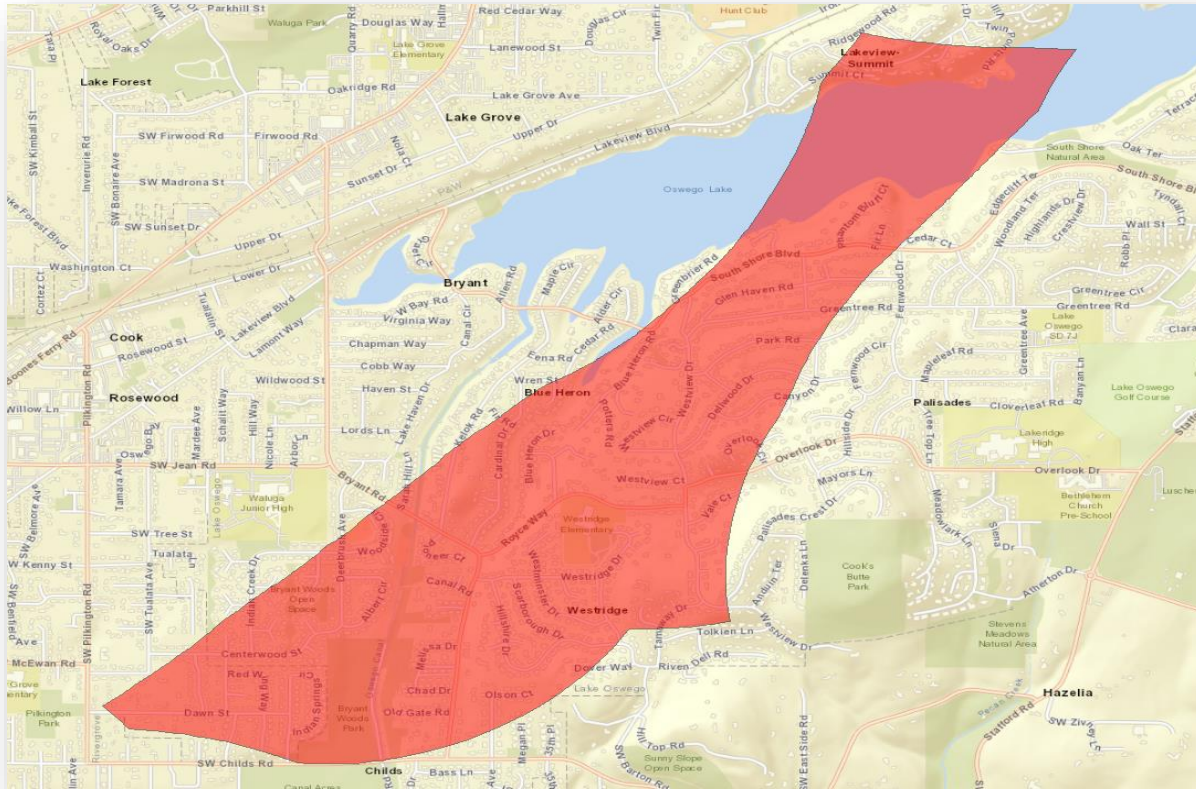
Forward Together Service Increase

County	Fall 2022	Forward Together	
	Weekly Revenue Hours	Weekly Revenue Hours	% Change
Clackamas	3,976	5,161	30%
Washington	7,189	11,016	53%
Multnomah	25,694	32,067	25%

New High Schools Near TriMet Service – Forward Together



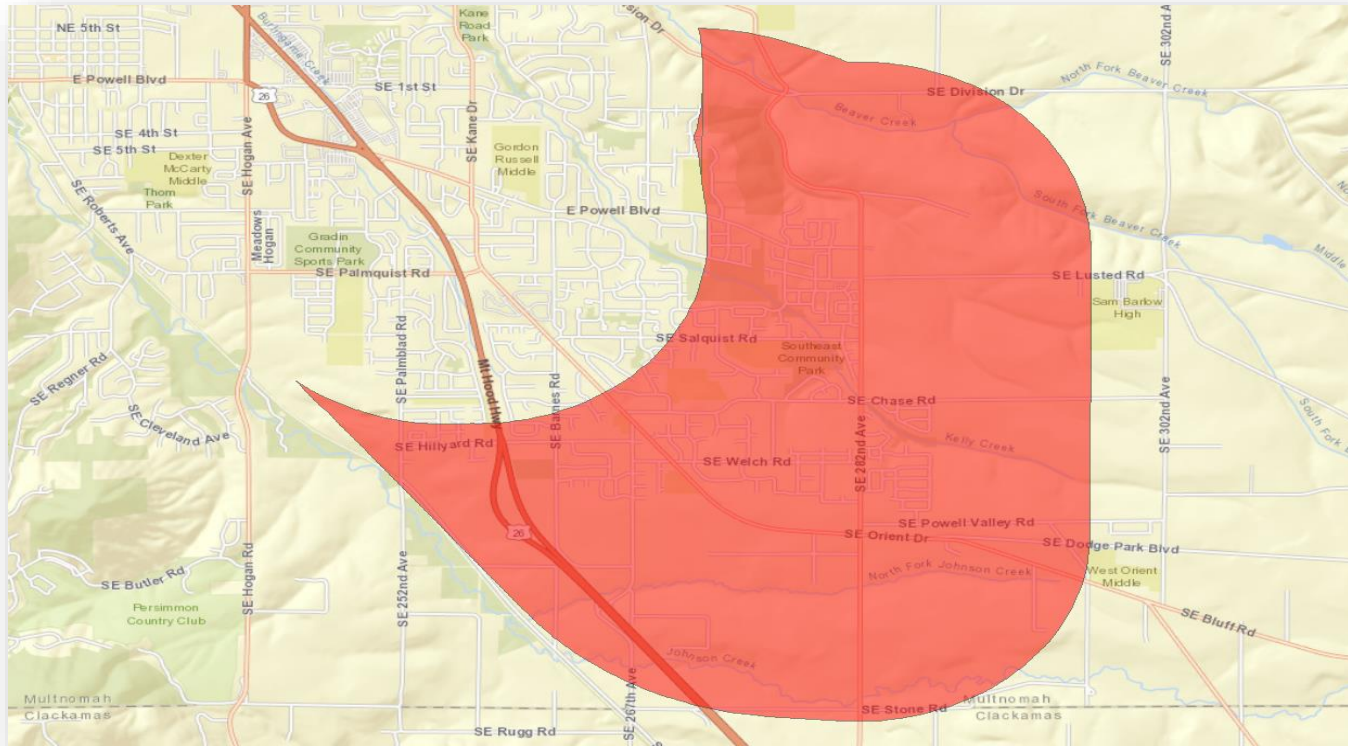
Forward Together – Reduced LIFT Service Areas



Aug. '23 to July '24:

- 1 address impacted
- 4 trips during the year

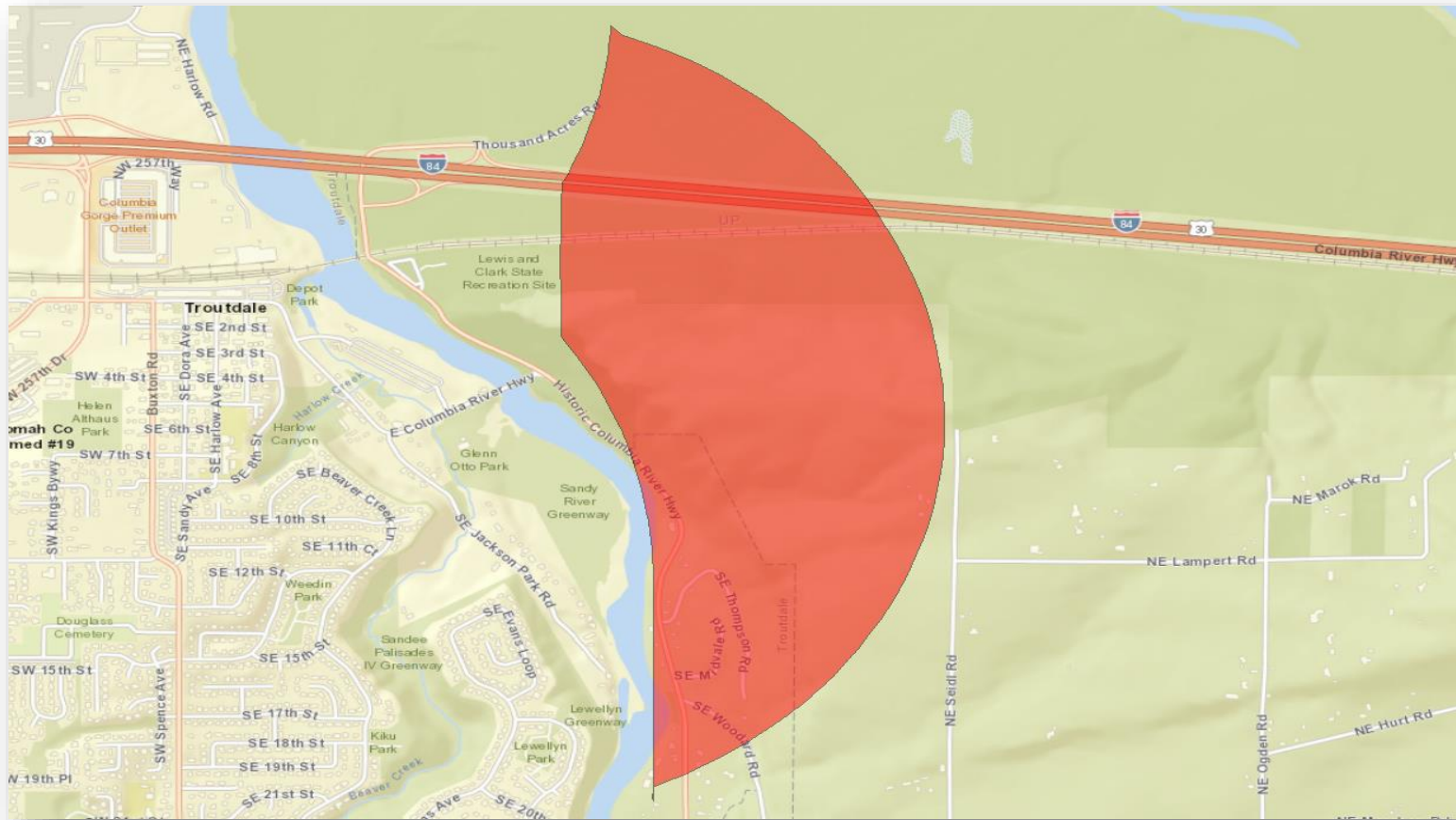
Forward Together – Reduced LIFT Service Areas



Aug. '23 to July '24:

- 23 addresses impacted
- 2,069 trips during the year
- TriMet will pilot a new paratransit shuttle in the area

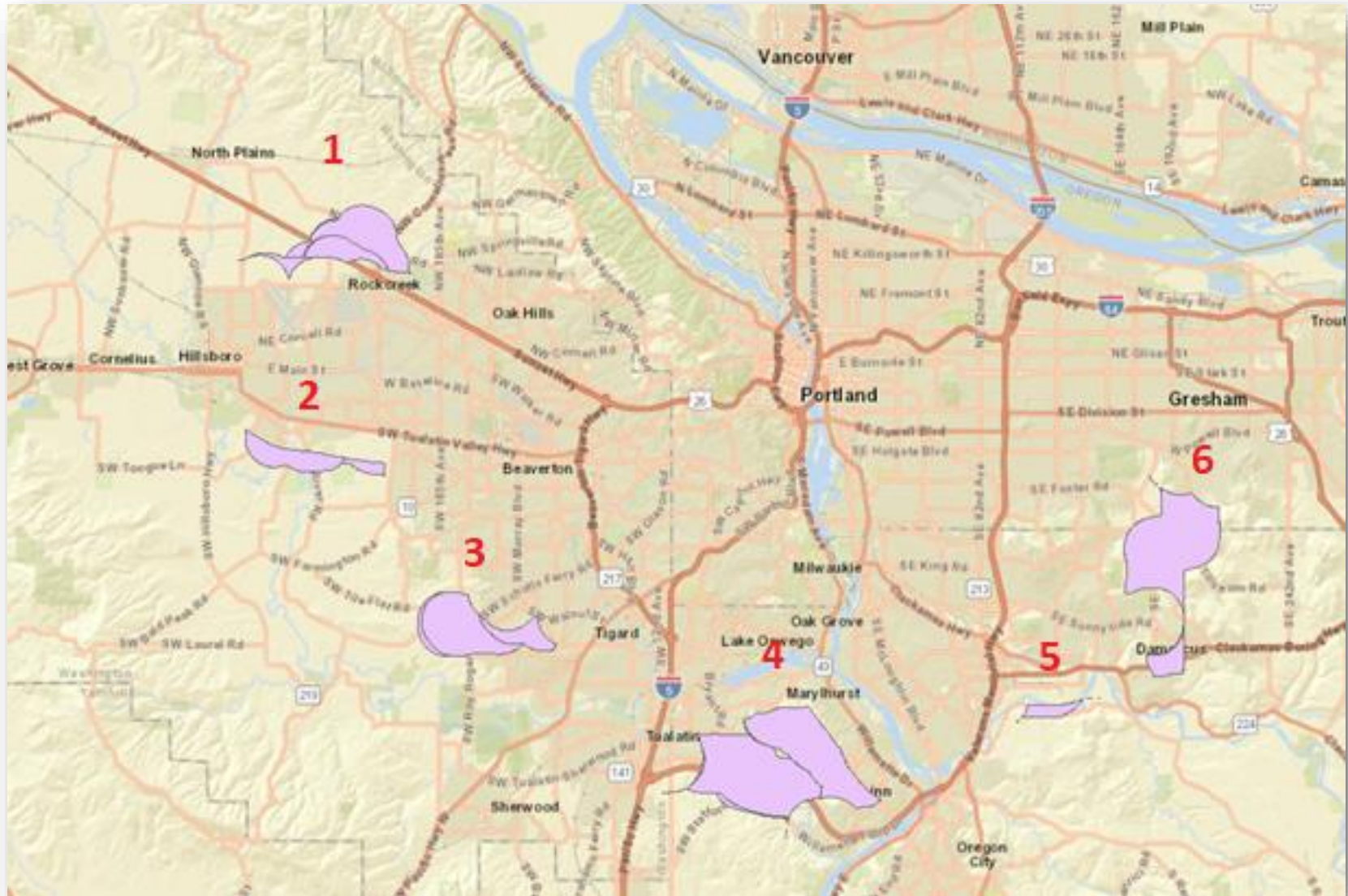
Forward Together – Reduced LIFT Service Areas



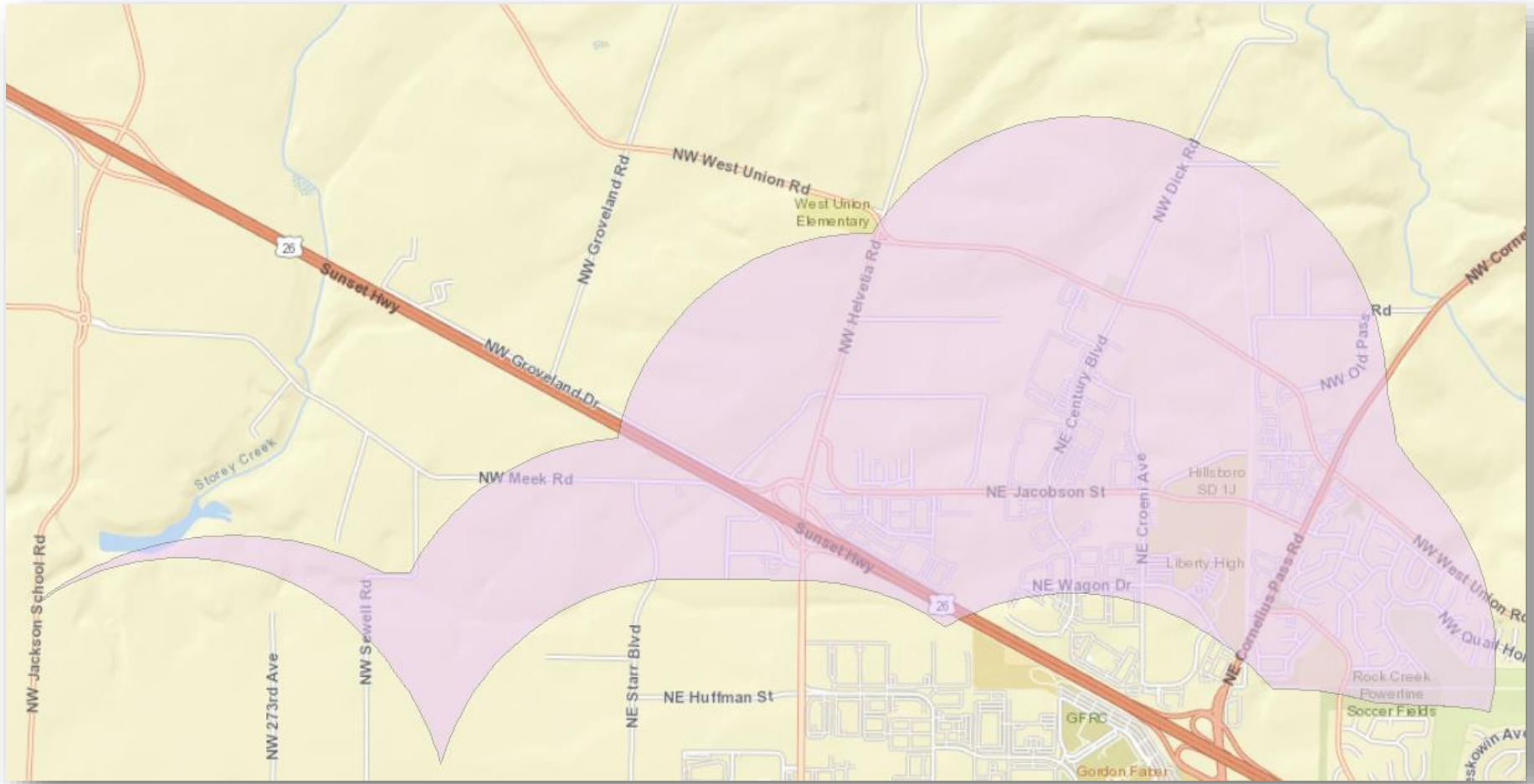
Aug. '23 to July '24:

- 0 addresses impacted
- 0 trips during the year

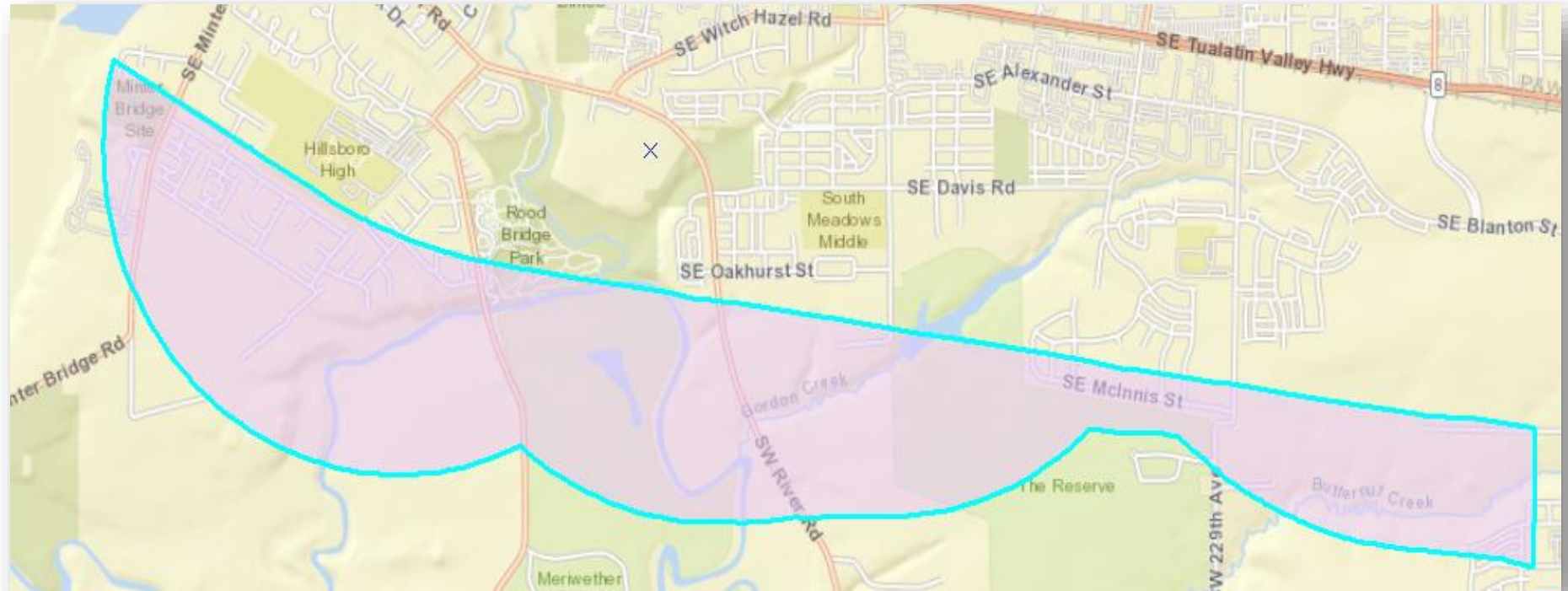
Forward Together – Increased LIFT Service Areas



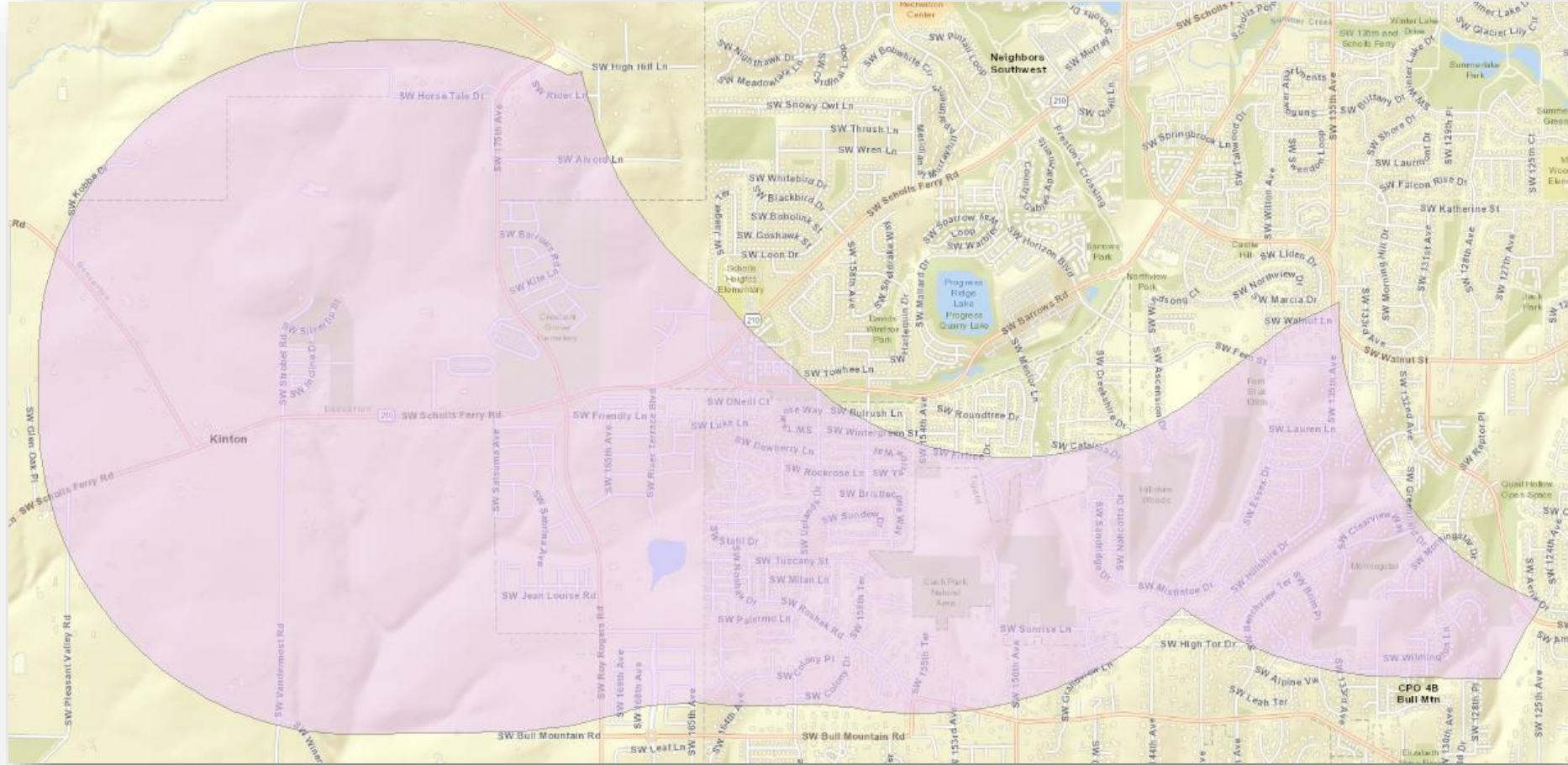
Forward Together – Increased LIFT Service Areas



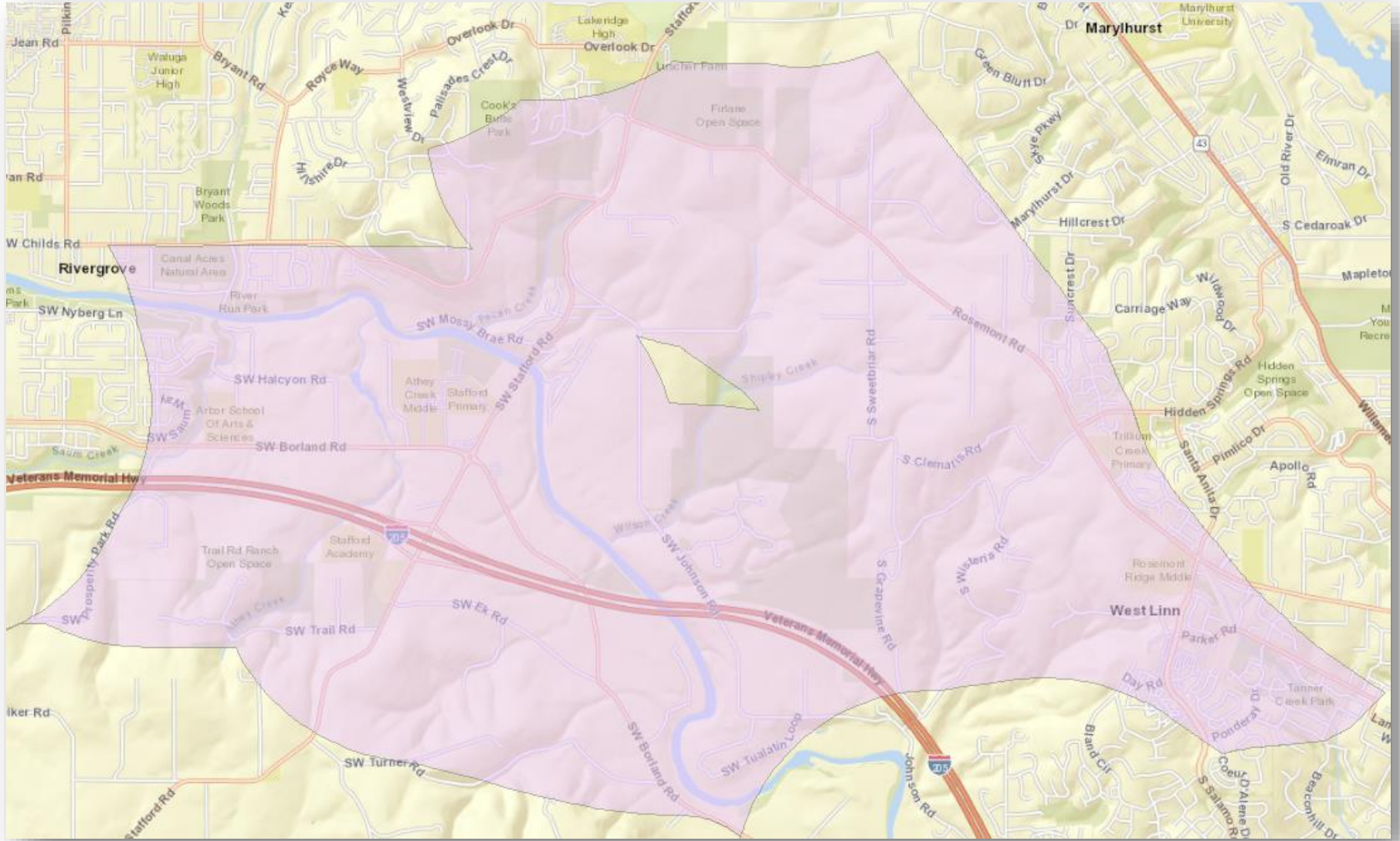
Forward Together – Increased LIFT Service Areas



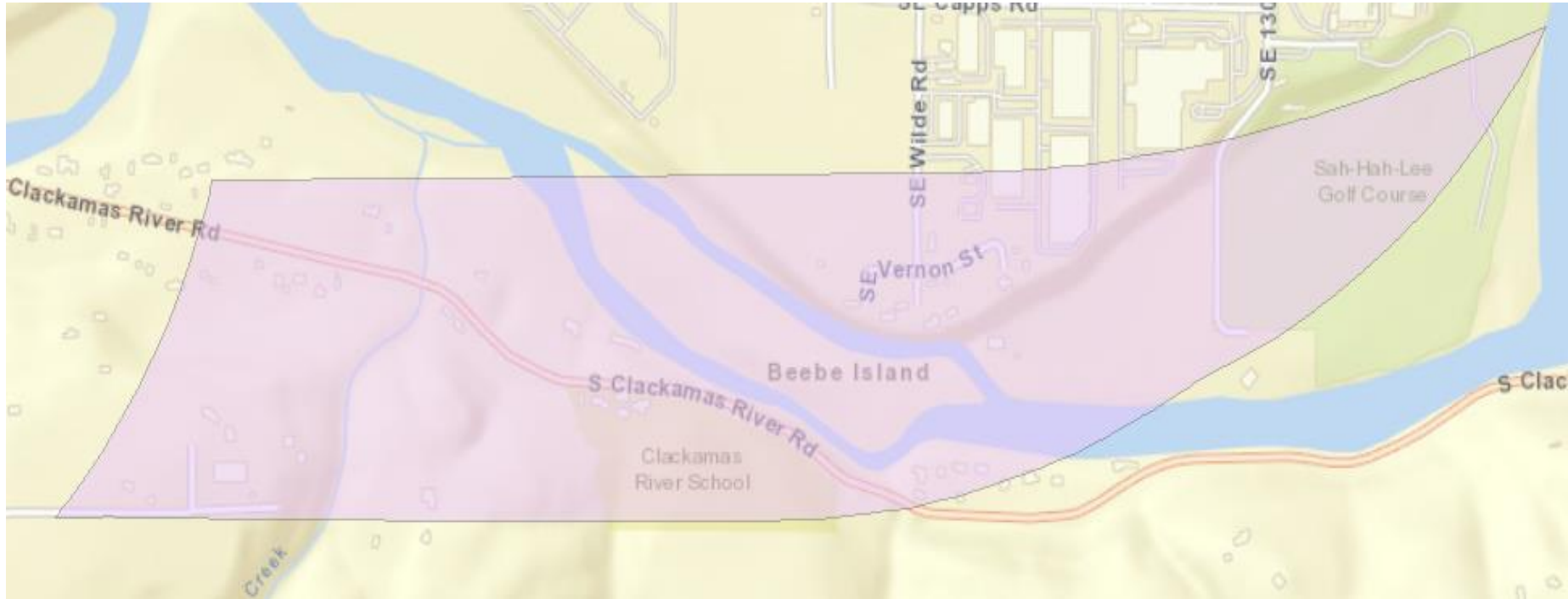
Forward Together – Increased LIFT Service Areas



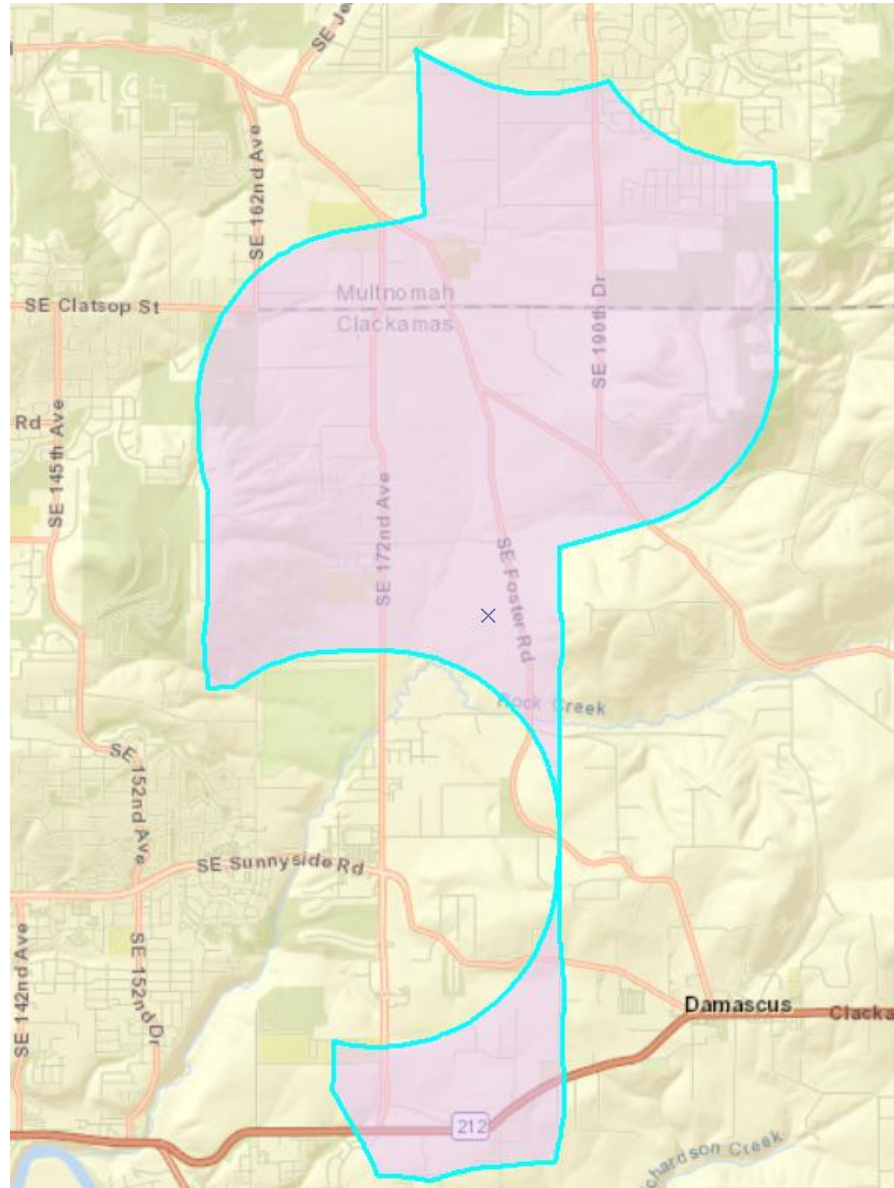
Forward Together – Increased LIFT Service Areas



Forward Together – Increased LIFT Service Areas



Forward Together – Increased LIFT Service Areas



Committee Stipend Program

Committee Stipend Program

Program Policy

- Stipends offered to encourage community participation
- Up to \$50.00 per meeting
- Not available to members who are compensated to be on this committee
- Not available to employees who are employed by a local government
- Full policy to be sent to you
- Opt in/opt out

Meeting Adjourned